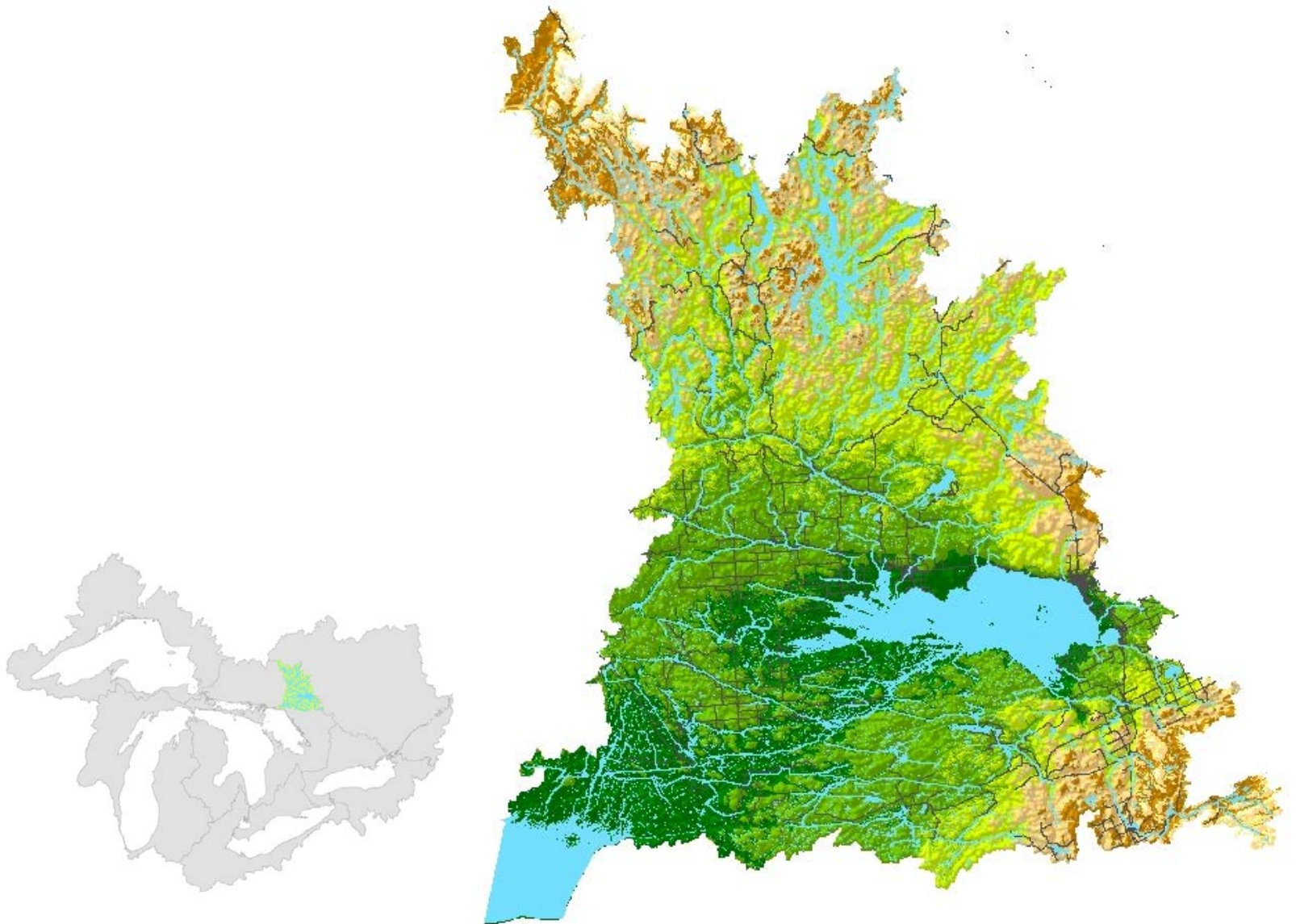


# Developing a strategic an integrated research plan



# Developing a strategic an integrated research plan

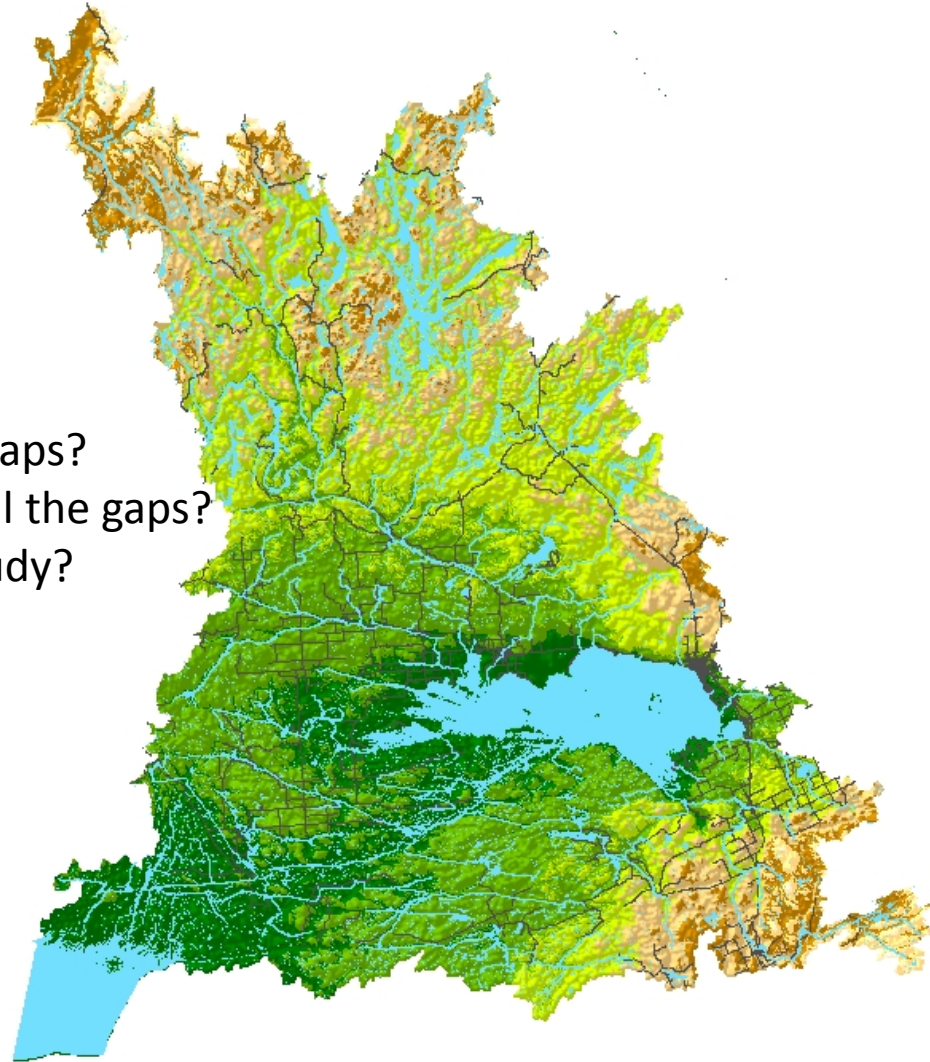
## State of the Basin Report

### Scoping




- What are the issues of concern?
- What information exists and where are the gaps?
- What additional work needs to be done to fill the gaps?
- What are the resources needed to do the study?

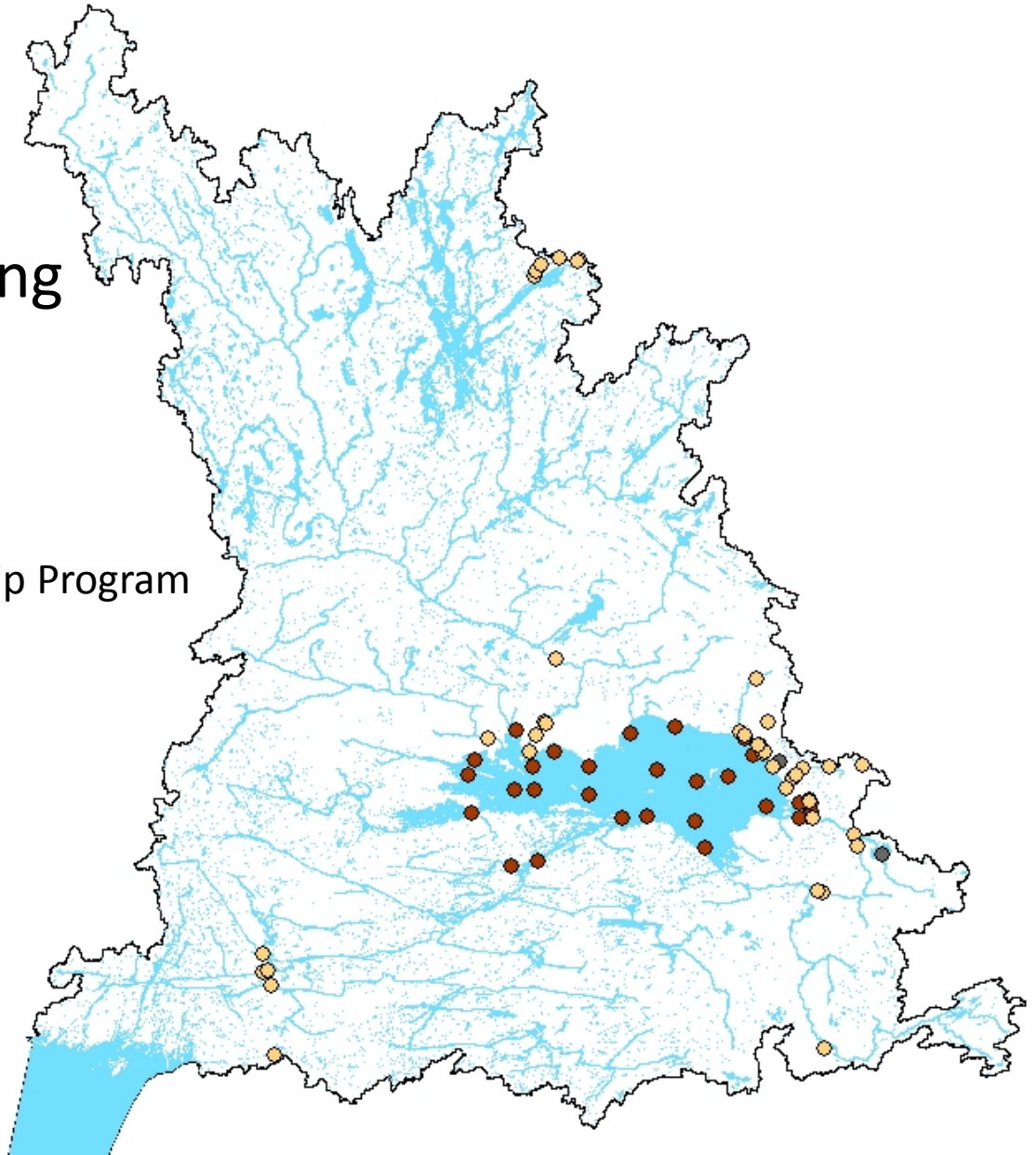
### Characterize the system

- What are the resources?
- What are the functions and linkages?
- What are they key management issues?
- What are the information gaps?



# Water Quality Monitoring

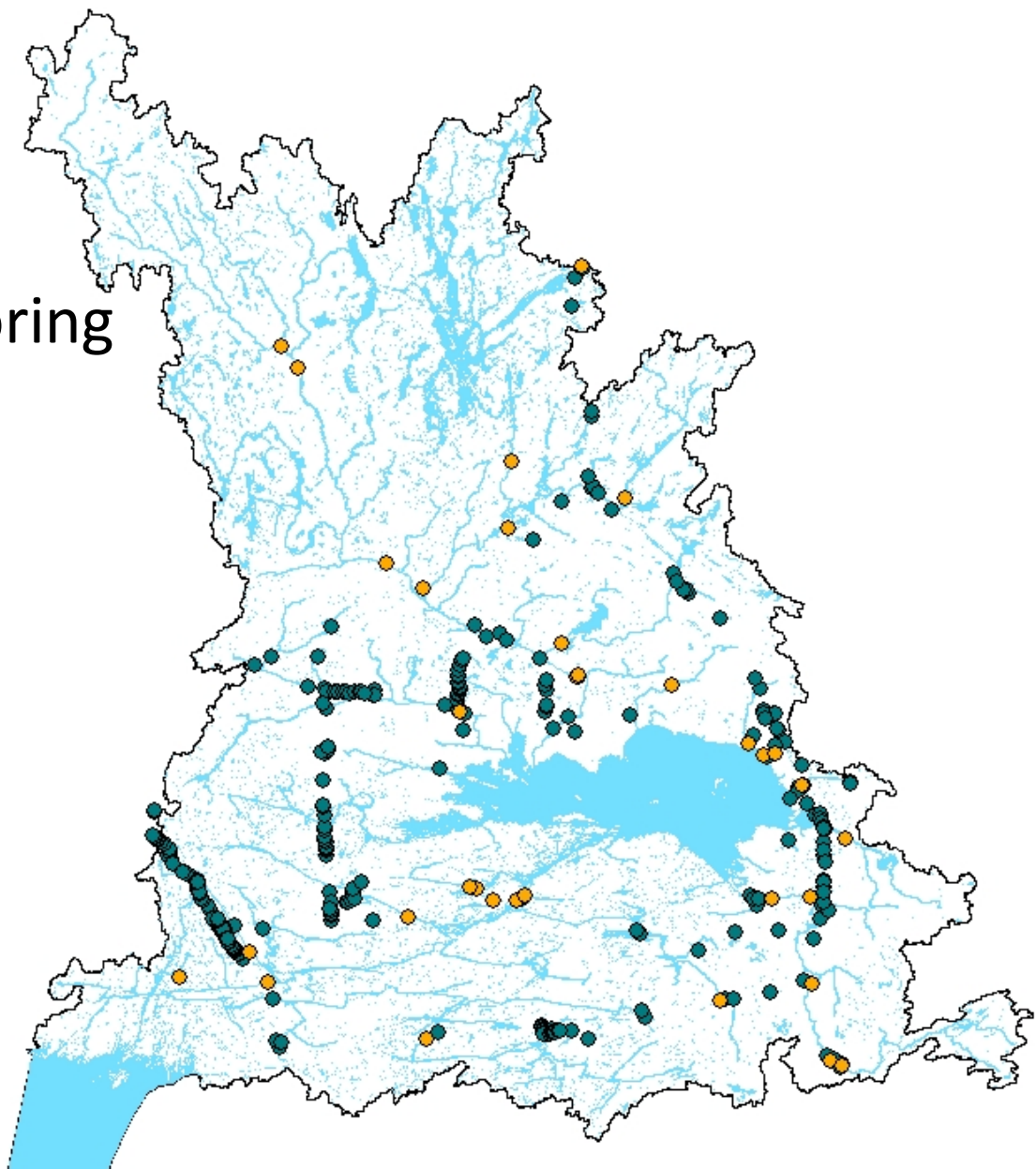
-  PWQMN (streams)
-  Ontario Lake Partnership Program
-  PGQMN



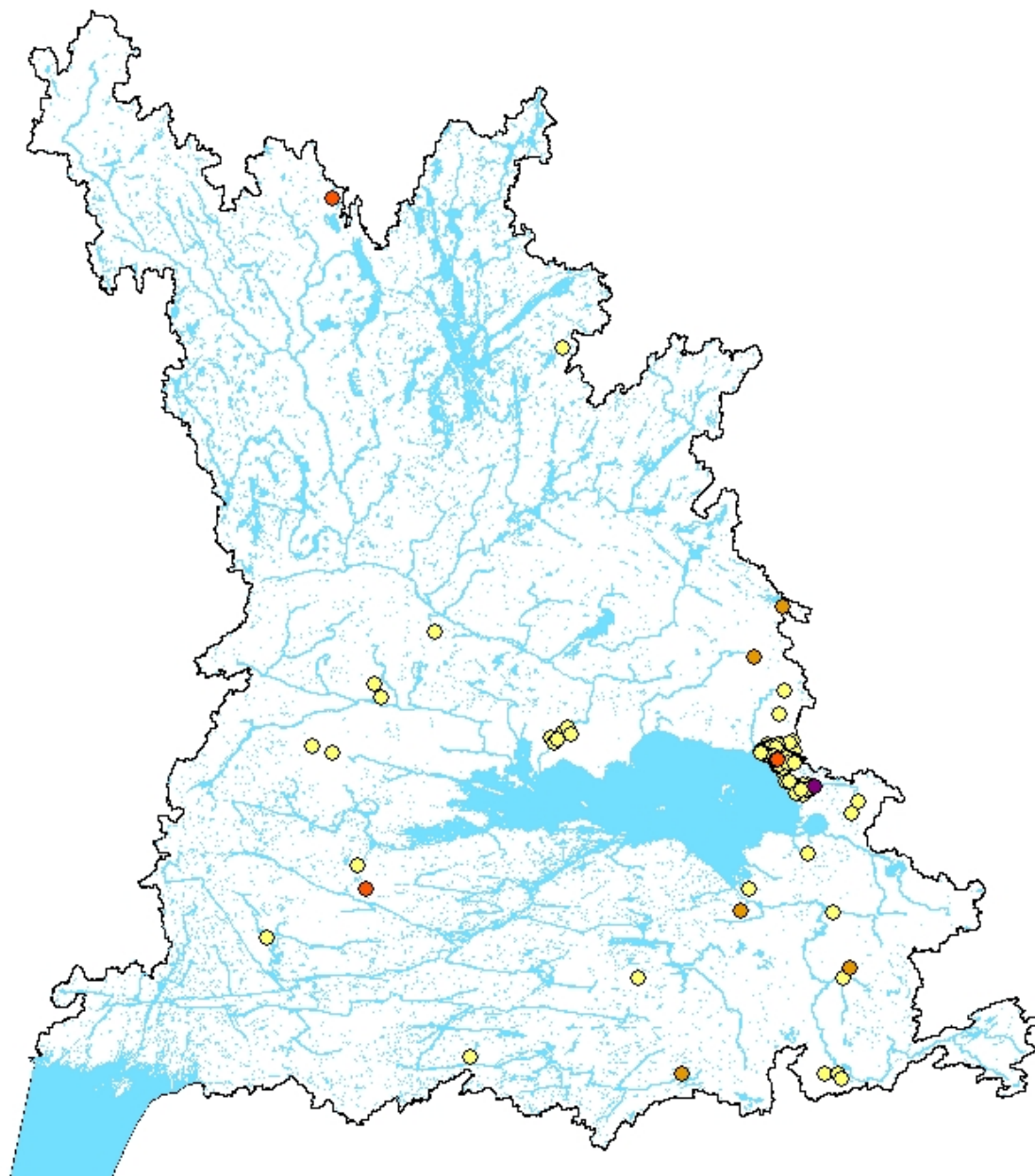
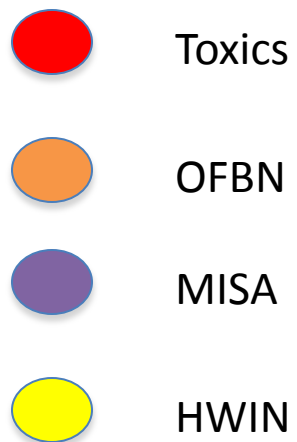


# Water Quantity Monitoring

- Hydrometric stations
- Permit To Take Water

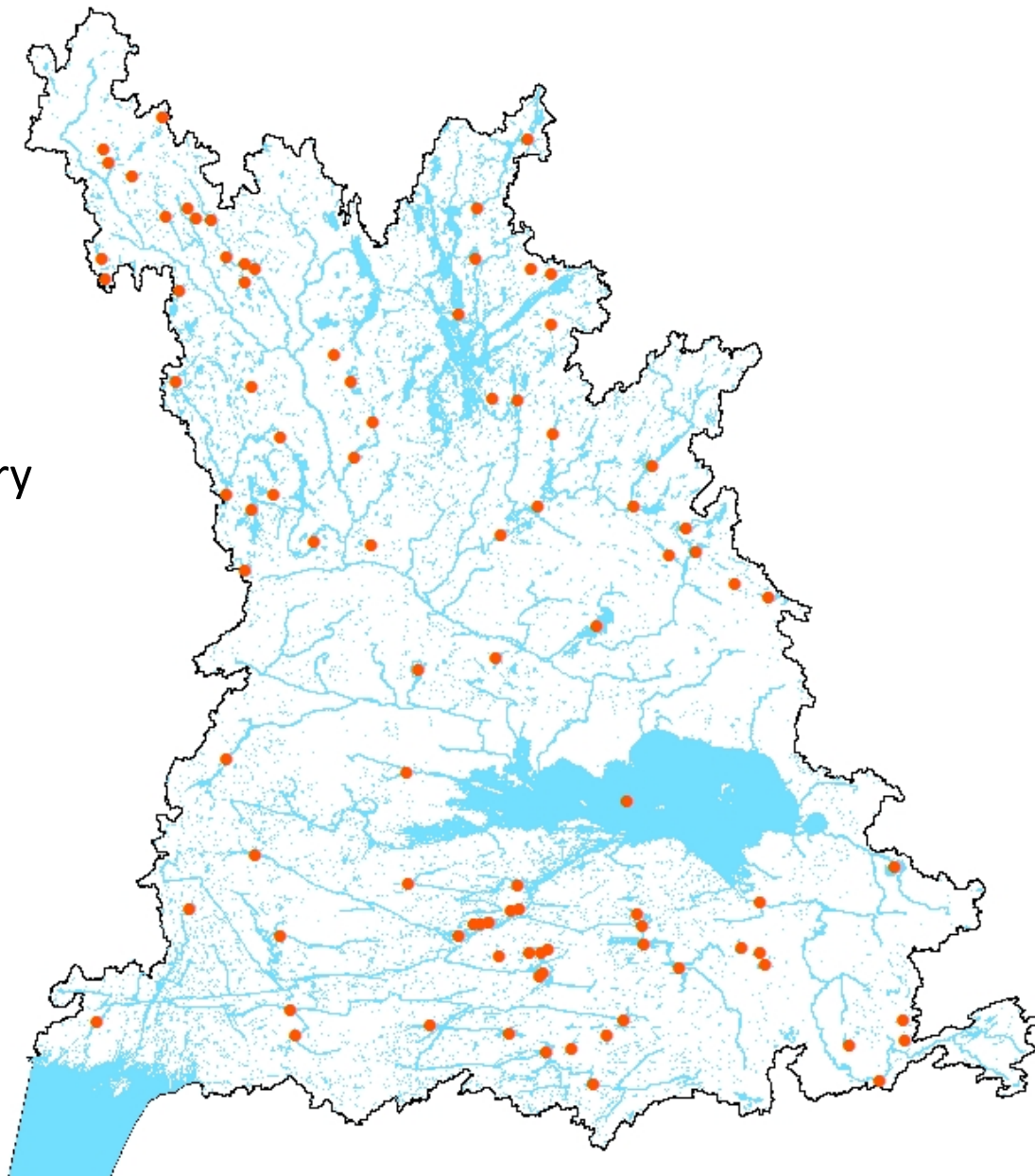


# Industry Monitoring





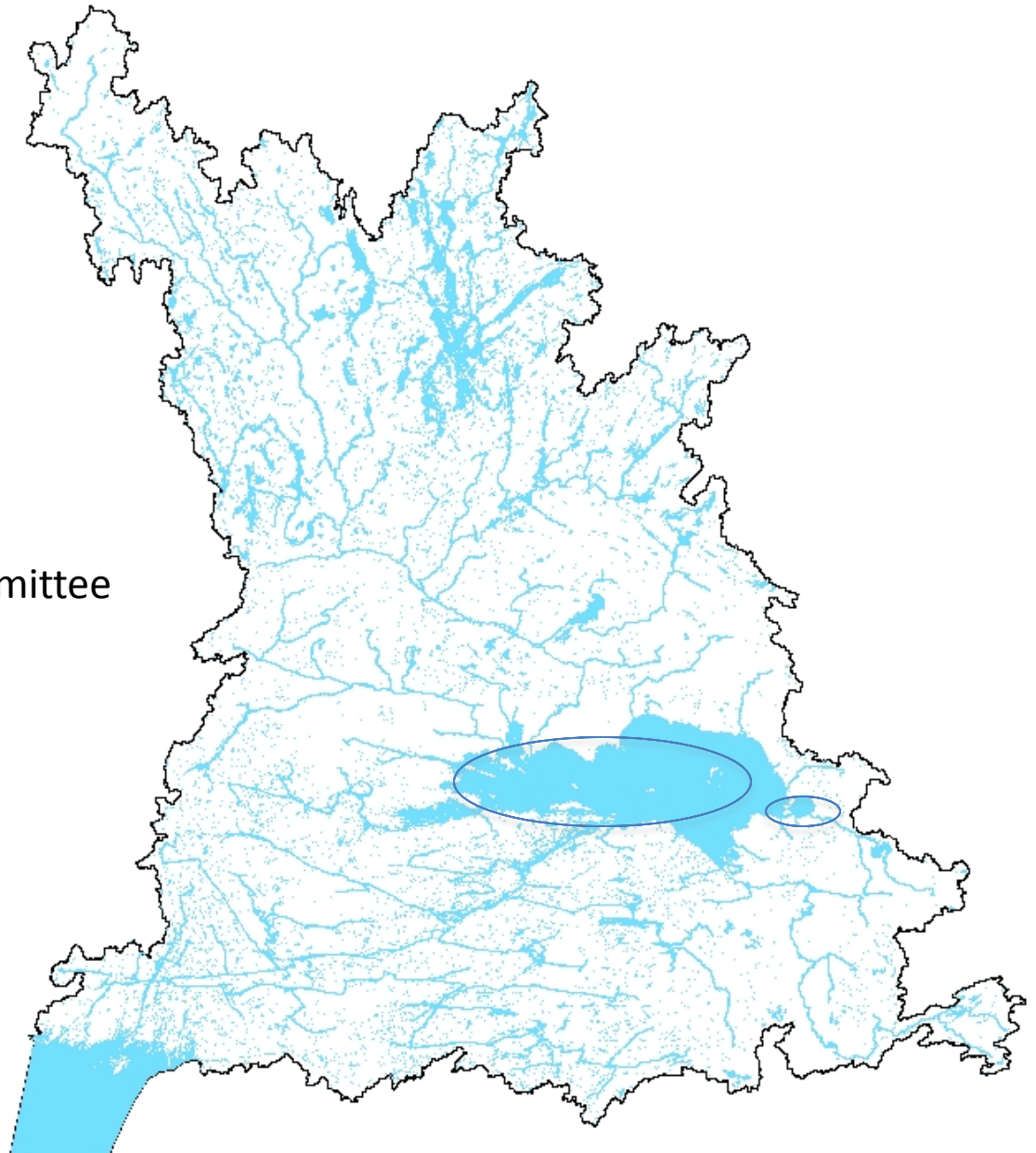
Sport Fisheries Advisory



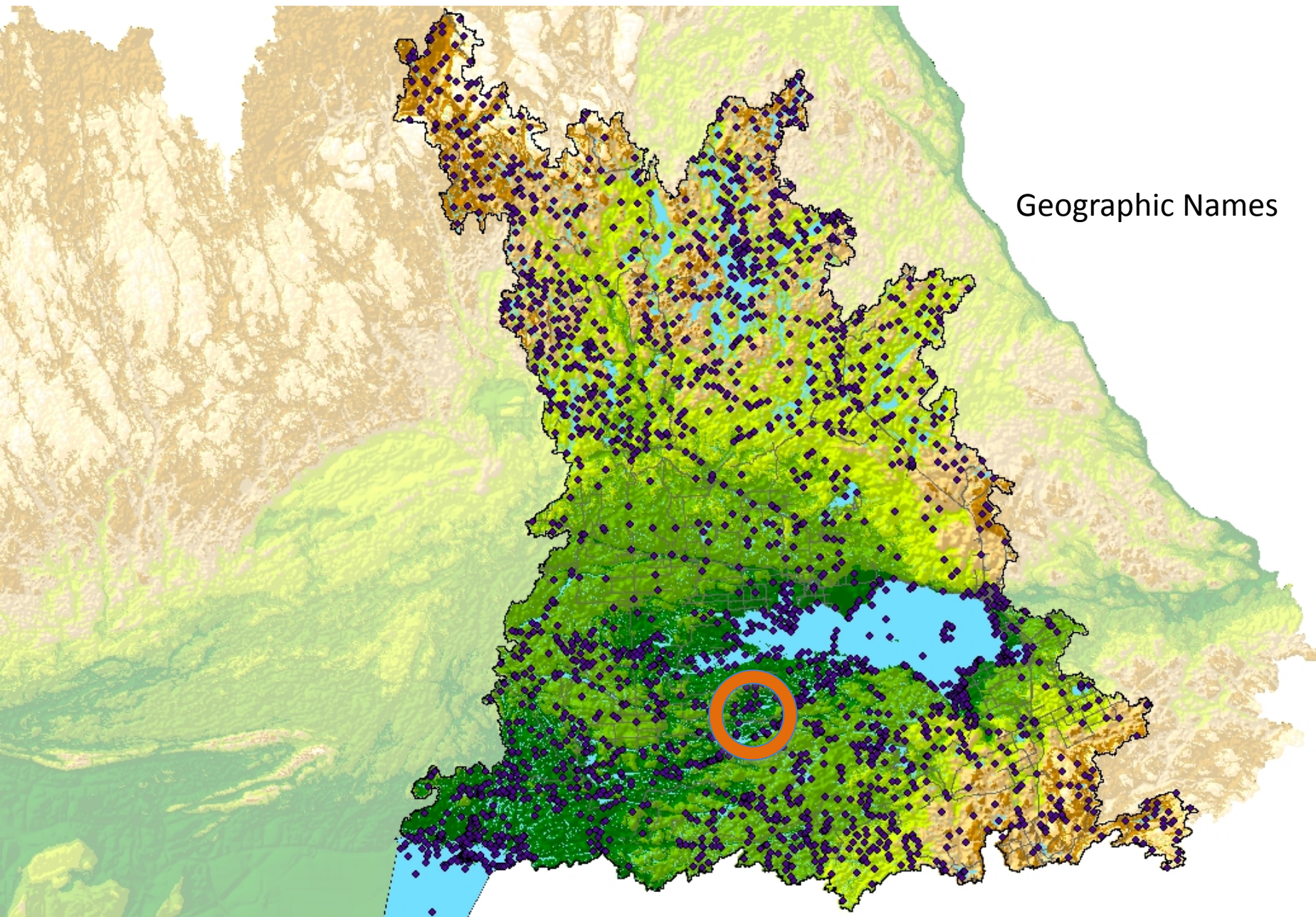
# Citizen Science

Jean-Marc Fillion

Callander Bay Sustainability Committee









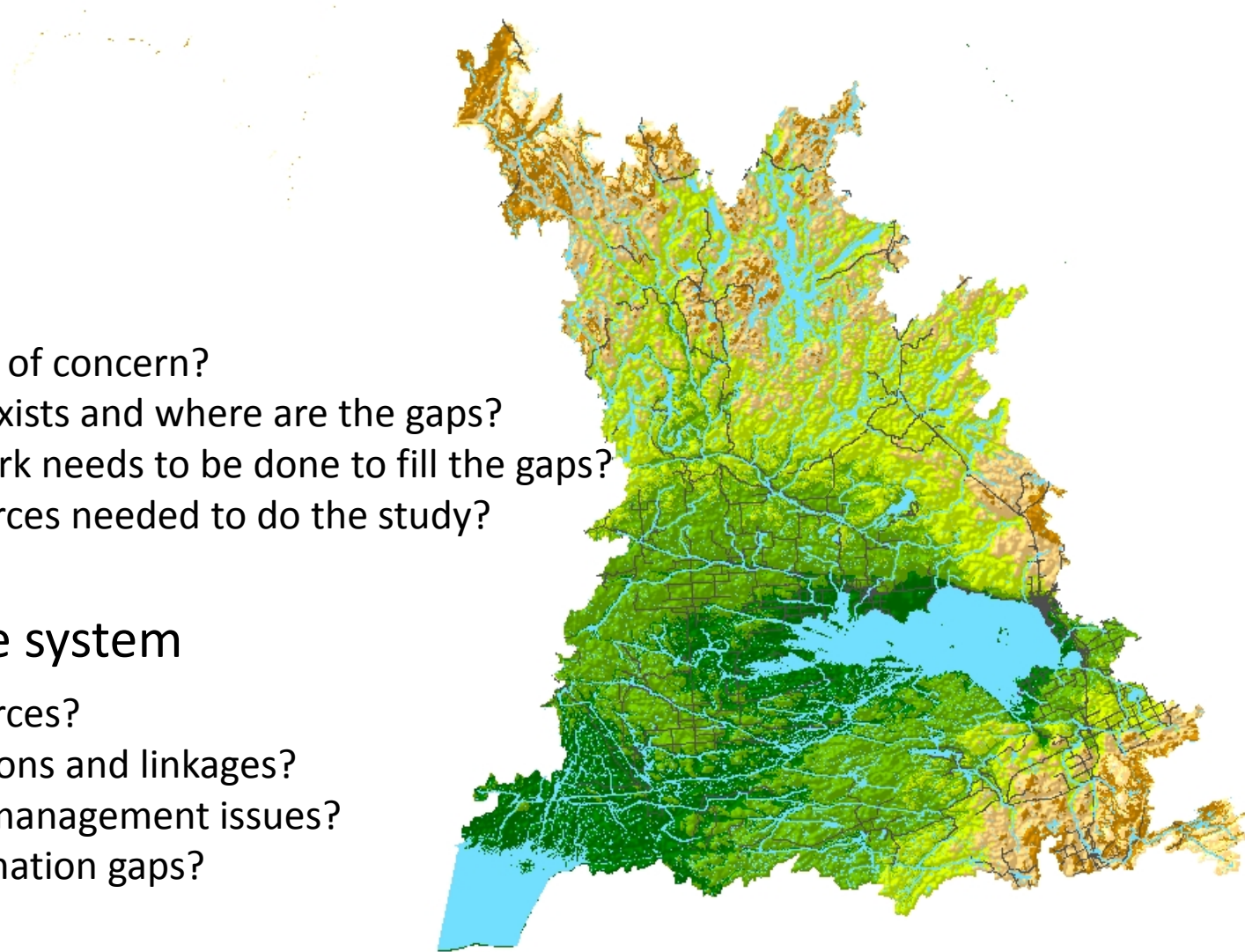
# Developing a strategic an integrated research plan

## Scoping

- What are the issues of concern?
- What information exists and where are the gaps?
- What additional work needs to be done to fill the gaps?
- What are the resources needed to do the study?

## Characterize the system

- What are the resources?
- What are the functions and linkages?
- What are they key management issues?
- What are the information gaps?



# Research in 2014

- Nipissing University
  - Callandar Bay
  - Wasi Watershed
  - Lake Nipissing watershed Isoscapes



# Wasi Event Sampling

- Event-based sampling in Wasi watershed (NBMCA, Nipissing University, Environment Canada)



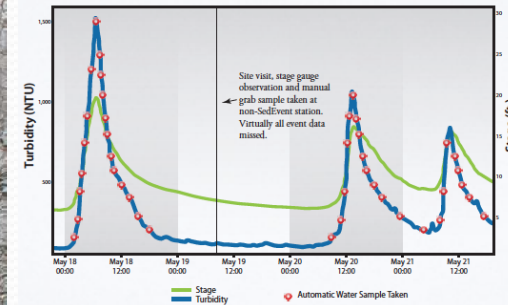
Turbidity Sensor



Auto-sampler



FTS Sedevent system



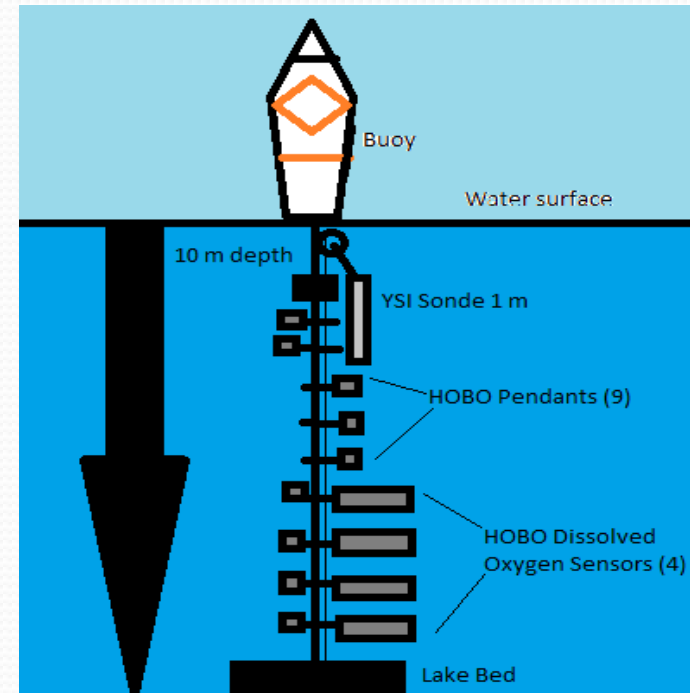
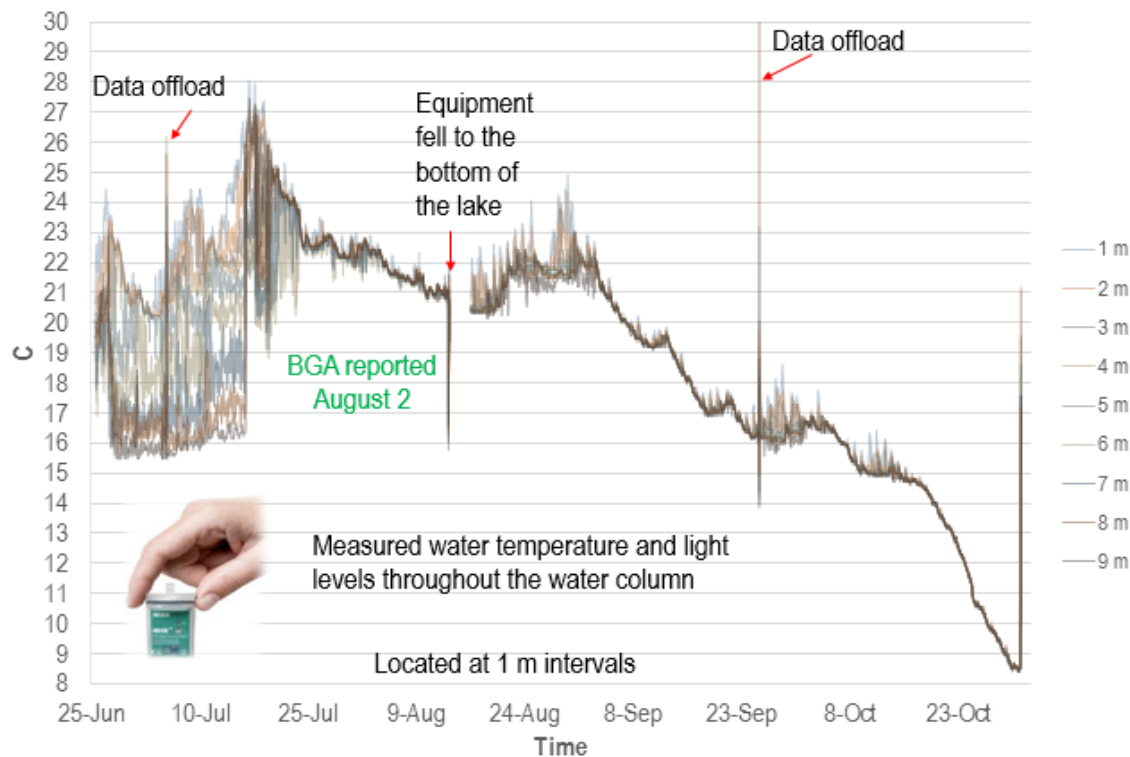


# Callandar Bay Monitoring

- Buoy deployment in Spring 2014 – monitoring
- Potential to add water quality/isotope sampling



Temperature profile from June 25 to October 31, 2013



# Lake Nipissing Isoscapes

- Continued synoptic sampling.
- Winter 2013-14 snow sampling (further development planned)

